

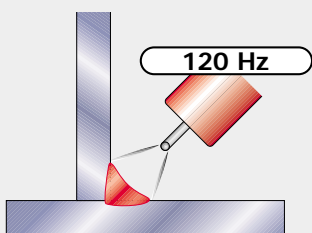
## ADVANTAGE

- ✓ Single Phase Auto Sensing for either 230V or 115V primary input.
- ✓ Digital inverter technology allowing 100% reproducible results.
- ✓ High duty cycle, 200A / 40% at 40°C.
- ✓ Power Factor Correction to ensure high output for aluminium welding
- ✓ Adjustable cleaning and penetration for perfect aluminium welding.
- ✓ Three wave shapes for AC TIG welding – Square, Triangle and Sinusoidal.
- ✓ Variable AC frequency for control of travel speed and penetration.
- ✓ Full featured and user-friendly control panel layout.
- ✓ Digital display allows precise setting of welding parameters.
- ✓ Weighing only 17.6 Kg., The V205-T is both lightweight and portable.
- ✓ Available either air-cooled or water-cooled.
- ✓ Solid and robust construction, built the Lincoln way 'Rugged & Reliable'.
- ✓ Two year warranty.

## Perfect Performance, Digital Dynamics

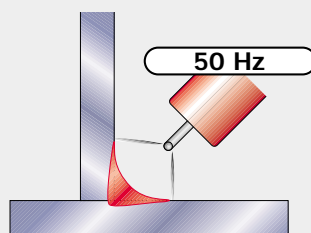
The Invertec V205-T AC/DC TIG welding machine has been designed and manufactured using the latest inverter digital technology enabling the machine to combine an excellent 200A @ 40% duty cycle with the portability provided by a single-phase 230/115V single-phase machine.

The V205-T AC/DC controller provides all the features you would expect from a professional AC/DC TIG inverter welding machine combined with a user-friendly layout. A variable frequency control with this machine allows the welder to adjust the arc focus to suit the application.



High frequency → tight arc

- Less distortion
- Higher travel speed



Low frequency → wide arc

**LINCOLN**®  
**ELECTRIC**

## TECHNICAL SPECIFICATIONS

Product Name	Item Number	Standard Voltage	Fuse Size	Weight	Dimensions H x W x D	Protection Class	Insulation Class	Compliance
Invertec V205-T AC/DC	K1855-2	115/230V 1Ph	16A (slow)	17.6KG	380x210x480	IP23	H	EN 60974-1 EN 50199

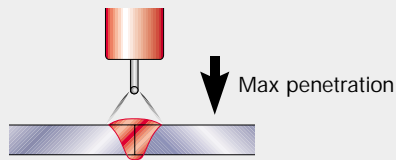
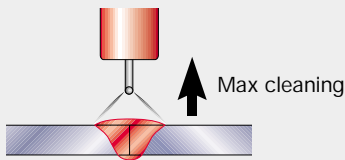
Product Name	Item Number	Standard Voltage	Freq.	H. Max	Dimensions H x W x D	Water Out	Weight incl. Coolant
Coolarc 20	K1904-1	230V 1Ph	50Hz	50M	180x210x480	2.5 L/Min.	9.4KG

## WELDING OUTPUT

Current Range	Rated Output TIG AC (40°C)	Rated Output MMA DC (40°C)	O.C.V.
6 - 200A	200A/40% / 230V 150A/35% / 115V 140A/100% / 230V 100A/100% / 115V	180A/35% / 230V 110A/35% / 115V 130A/100% / 230V 70A/100% / 115V	53.7V

## ACCESSORIES

Item Number	Description Remote Controls
K870	Foot amptrol
W7995066A	Welding Kit
W0400068A	Tig Torch 4m



A standard feature on the V205-T AC/DC is the adjustable cleaning and penetration used to gain the ideal balance between cleaning the aluminium surface of oxide and the penetration of the weld.

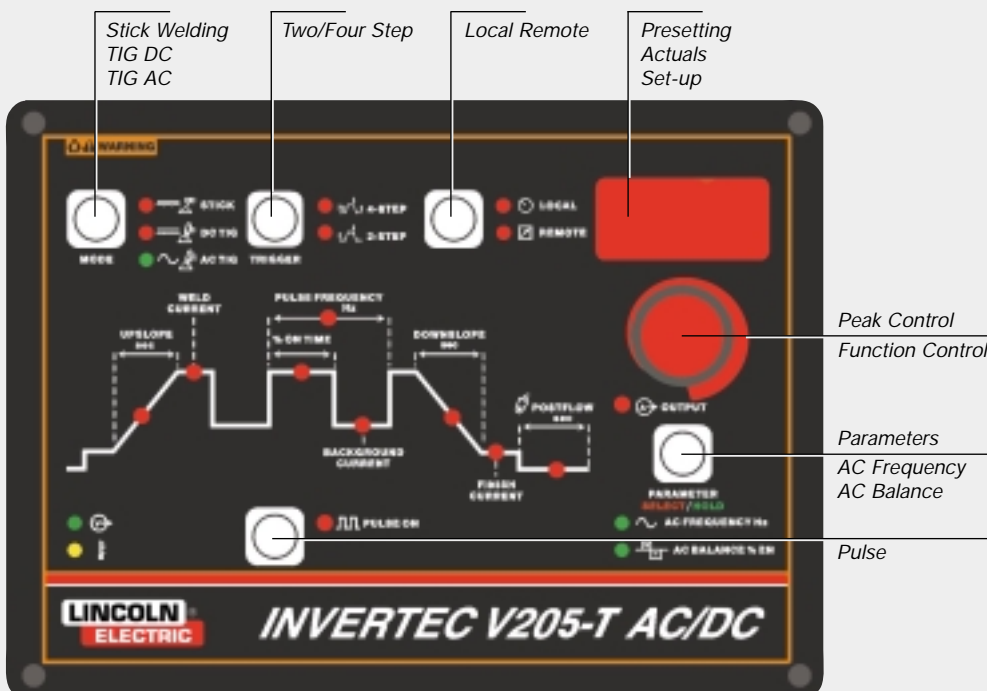
The machine operates using a square wave AC form as standard but can be set to produce either a sinusoidal or triangle wave form dependent on the welder's needs.

The machine is supplied air-cooled as standard, however it can be easily converted to water-cooled with the addition of the Lincoln Cool Arc 20 water-cooler. The addition of the Cool Arc 20 allows the machine to operate at high current with lightweight water-cooled torches.

The Invertec V205-T AC/DC is a well-featured user-friendly machine built to last.

## FEATURES

Feature	Parameter
AC frequency	20 - 150 Hz
AC balance	35 - 85% EN
Pulse frequency	0.25 - 500 Hz
On time peak	5 - 95%
Background current	6 - 200 A
Up slope Time	0 - 10 sec
Down slope Time	0.2 - 10 sec
Post Flow Time	0.2 - 60 sec
Wave shape	-Square -Triangle -Sinusoidal



Lincoln Electric Italia Srl  
Via G. Adamoli 239 b/c  
16141 Genova  
ph: +39 010 837911  
Fax: +39 010 8379151  
www.lincolnelectric.it

**LINCOLN**®  
**ELECTRIC**

LINCOLN ELECTRIC EUROPE